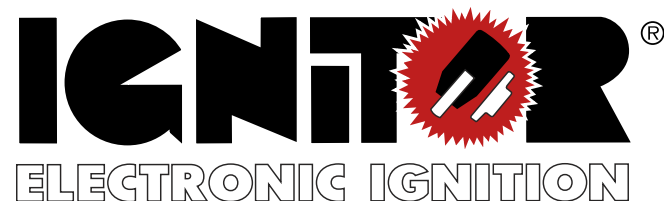


FLAME-THROWER COIL APPLICATIONS						
Use with:	System Voltage	Cylinders	Primary Resistance	Recommended Flamethrower Coils		
				Black	Chrome	Epoxy
Ignitor	12V	4	3.0 ohms	40511	40501	40611

**NOTE: REMOVE OR BYPASS EXTERNAL BALLAST RESISTOR/RESISTANCE WIRE WHEN INSTALLING THE RECOMMENDED FLAME-THROWER COIL.**



### 12-Volt Negative Ground Instructions

For Part Numbers: LU-143A

**CAUTION!!! Please read the following important information....**

- DO NOT USE SOLID CORE SPARK PLUG WIRE.** Use suppression or carbon type spark plug wires.
- Warning!!!** Leaving the ignition switch "ON" with the engine "OFF" for an extended period could result in permanent damage to the Ignitor.
- Four cylinder engines require a minimum of 3.0 ohms of primary resistance.
- NOTE:** If your Ignition coil has the recommended primary resistance, remove or bypass all external resistors. Do not remove resistors if the coil primary resistance is lower than 3.0 ohms.
- Go to [www.pertronix.com](http://www.pertronix.com) for additional information or <http://support.pertronix.com/kb/index.php> for Common Questions and Answers. For Technical Support Assistance call @ 909-547-9058
- See back page for coil recommendations.**

#### **DISTRIBUTOR DISASSEMBLY**

PRIOR TO INSTALLATION TURN IGNITION SWITCH OFF OR DISCONNECT THE BATTERY

- Remove the distributor cap, and rotor. Do not disconnect spark plug wires. Examine cap and rotor for wear or damage. Replace as needed.
- Disconnect the point wire from the negative (-) terminal of the coil.
- Remove two screws that retain the breaker plate. Lift out the complete plate.
- The Ignitor does not require any modification to the distributor. Therefore the breaker plate, point, condenser and hardware can be used as backup.
- Clean all dirt and excess oil from the distributor and point cam.

#### **IGNITOR INSTALLATION**

- Vacuum advance distributors only:**
- Install new plate with Ignitor module attached. Align the vacuum advance arm with the pin on the new plate before pushing the plate down into the distributor body. Attach the loose end of the ground wire with one of the original mounting screws.
- GO TO STEP 8**

#### LIMITED WARRANTY

Pertronix, Inc. Warrants to the original Purchaser of its solid-state ignition system (product) that the Ignitor, magnet assembly and wiring (components) shall be free from defects in material and workmanship for a period of (30) months from the date of purchase.

If within the period of the foregoing warranty Pertronix finds, after inspection, that the product or any component thereof is defective, Pertronix will, at its option, repair such products or component or replace them with identical or similar parts PROVIDED that within such period Purchaser:

- Promptly Notifies Pertronix, in writing, of such defects.
- Delivers the defective products product or component to Pertronix (ATTN: Warranty) with proof of purchase date; and
- Has installed and used the product in a normal and Proper manner, consistent with Pertronix printed instructions.

THE FORGOING LIMITED WARRANTY IS EXCLUSIVE AND IN LIEU OF ALL OTHER WARRANTIES, WHETHER EXPRESSED OR IMPLIED, INCLUDING AND IMPLIED WARRANTY OR MERCHANTABILITY OR FITNESS FOR A PURPOSE.

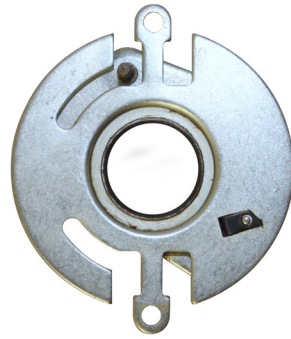
THE FURNISHING OF A REPAIR OR REPLACEMENT COMPONENTS SHALL CONSTITUTE THE SOLE REMEDY OF PURCHASER AND THE SOLE LIABILITY OF PerTronix WHETHER ON WARRANTY, CONTRACT OR FOR NEGLIGENCE, AND IN NO EVENT WILL PerTronix BE LIABLE FOR MONEY DAMAGES WHETHER DIRECT OR CONSEQUENTIAL.



440 E. Arrow Highway, San Dimas, CA. 91773  
909-599-5955 [www.pertronix.com](http://www.pertronix.com)

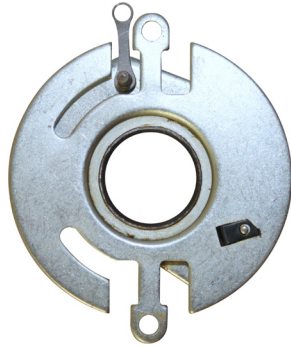
4. **Non Vacuum advance distributors only:** Turn the new plate over. Align the vacuum pin with the slot in the plate as shown in figure A.

FIGURE A



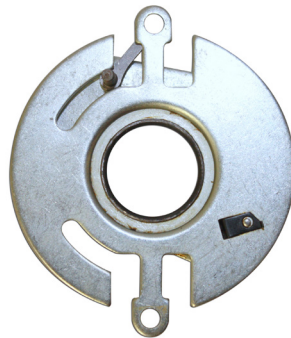
5. Place the small end of the vacuum lockout onto the vacuum pin and slide all the way down. See Figure B.

FIGURE B



6. Rotate the plate so that the larger end of the vacuum lockout is aligned with the plate hole. See Figure C.  
7. Install plate into body of distributor. Attach the loose end of the ground wire with one of the original mounting screws.

FIGURE C



8. Insert wires through hole in distributor housing, and pull wire grommet into place. Make sure wires do not interfere with any moving parts.  
9. Install magnet sleeve over the distributor shaft, onto point cam. Rotate the sleeve until a slight locating position is felt before applying pressure. Press down firmly insuring sleeve is fully seated.  
10. Module and magnet sleeve air gap is not adjustable.  
11. Reinstall rotor and distributor cap. Make sure all spark plug wires are securely attached. Examine spark plug wires for wear or damage. Replace as needed.  
12. **Warning! DO NOT USE WITH SOLID CORE SPARK PLUG WIRES.**  
13. See Wiring Instructions.

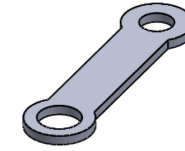


Illustration of Vacuum Lockout

### WIRING INSTRUCTIONS

A BALLAST RESISTOR OR RESISTANCE WIRE MAY OR MAY NOT BE INCLUDED IN THE ORIGINAL EQUIPMENT.

1. Connect the Ignitor black wire to the negative (-) terminal of the ignition coil.
2. For installations that do not use a primary ballast resistor or resistance wire, connect the Ignitor red wire to the positive (+) terminal of the ignition coil. (See Figure A)
3. For installations that use a primary ballast resistor or resistance wire, connect the Ignitor red wire to the ignition switch side of the ballast resistor or resistance wire. (See Figure B).
4. Reconnect battery and make sure all wires are connected.
5. The engine can now be started. Let the engine run for a few minutes and then set the timing in the conventional manner.

FIGURE "A"

USE FIGURE "A" ONLY WHEN INSTALLING THE RECOMMENDED COIL.

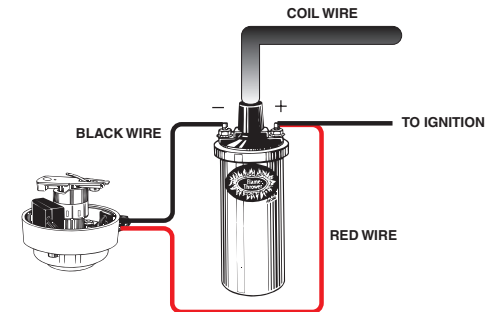


FIGURE "B"

USE FIGURE "B" WHEN USING THE STOCK COIL WITH THE BALLAST RESISTOR OR RESISTANCE WIRE.

