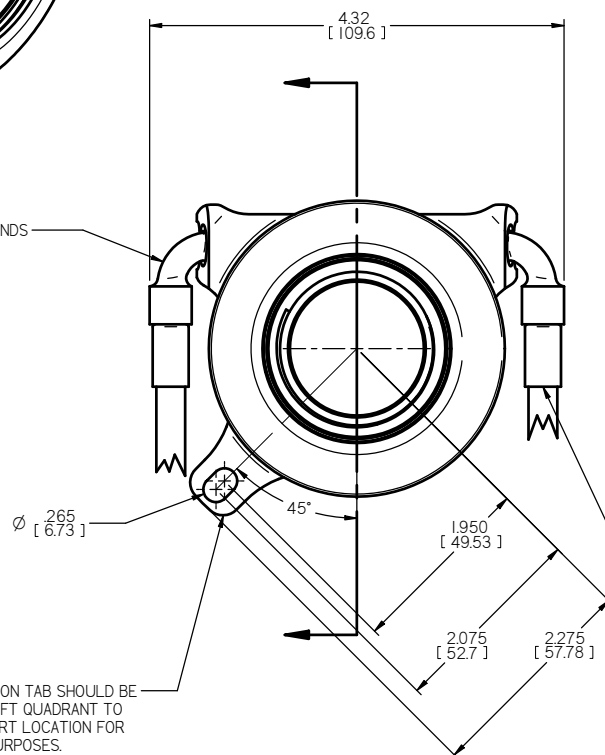


THREADED MOUNTING SLEEVE CHART			
SLEEVE P/N	SLEEVE I.D.	USED IN ASSY P/N	O-RING P/N
62-651	1.438"	60-6032, 60-6034	61-627-I
62-652	1.375"	60-6031, 60-6033	61-628-I
62-653	1.000" *	60-6000	N/A

*MAY BE MACHINED TO MATCH O.D. OF TRANSMISSION PILOT TUBE. DO NOT EXCEED 1.450" DIAMETER.

AN-4 HYDRAULIC LINES, 15" LONG, FEMALE SWIVEL ENDS (SHOWN TRUNCATED)

CUSTOM DUAL O-RING FITTING WITH SNAP RING ALLOWS 360° ROTATION FOR ROUTING

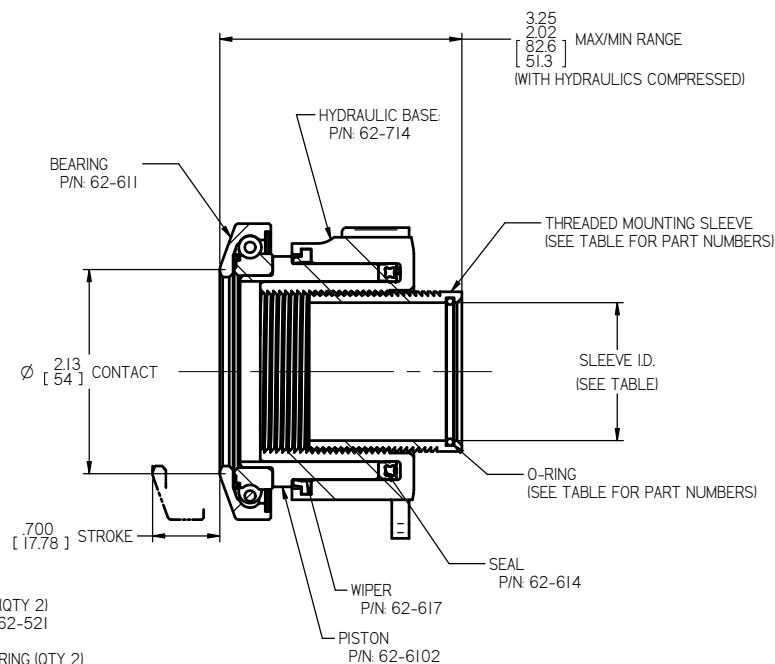


ANTI-ROTATION TAB SHOULD BE IN LOWER LEFT QUADRANT TO OPTIMIZE PORT LOCATION FOR BLEEDING PURPOSES.

HOSE (QTY 2)
P/N: 62-521

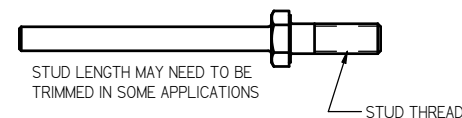
SNAP RING (QTY 2)
P/N: 5100-43

BLEED ASSEMBLY (QTY 1)
P/N: 62-522



ANTI-ROTATION STUD CHART		
STUD P/N	STUD THREAD	USED IN ASSY P/N
95-603	5/16"-18 UNC	60-6031, 60-6032
95-604	M8 X 1.25	60-6033, 60-6034

STUD NOT INCLUDED IN 60-6000 "UNIVERSAL" ASSEMBLY.



STUD LENGTH MAY NEED TO BE TRIMMED IN SOME APPLICATIONS

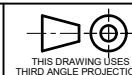
NOTES:

1. DIMENSIONS AND TOLERANCES PER ASME Y14.5 - 2009
2. UNLESS OTHERWISE SPECIFIED, ALL DIMENSIONS ARE IN INCHES [mm].
3. USE ONLY WITH DOT-3 OR DOT-4 BRAKE FLUID.
4. NO INTERNAL TRAVEL LIMITER. MUST BE USED WITH CLUTCH PEDAL STOP.
5. SEAL REBUILD KIT = 62-905.
6. SEAL INSTALLATION TOOL = 96-002.
7. HYDRAULIC AREA = 1.215 SQ IN.
8. EITHER PORT MAY BE USED FOR FEED OR BLEED. RECOMMEND USING UPPER PORT AS BLEED PORT.

TILTON ENGINEERING, INC.
25 EASY STREET, P.O. BOX 1787, BUELLTON, CA 93427
PHONE: 805/688-2353 FAX: 805/688-2745 WWW.TILTONRACING.COM

TITLE: **HYDRAULIC RELEASE BEARING ASSEMBLY**
54mm RADIUS FACE, ADJUSTABLE BASE, THREADED SLEEVE MOUNT

DRAWN BY WAHL	CHKD	SCALE 1:1	SIZE C	DWG 7411	REV NC
P/N SEE TABLE	DATE 3/3/2022	SHEET 1 OF 1			



THIS DRAWING USES
THIRD ANGLE PROJECTION

tiltonENGINEERING INC.

This document contains proprietary information of TILTON ENGINEERING, INC. and its receipt or possession does not convey the right to reproduce, disclose its contents, or to manufacture, use or sell anything it may describe. Reproduction, disclosure, or use without specific written authorization of TILTON ENGINEERING, INC. is strictly forbidden.