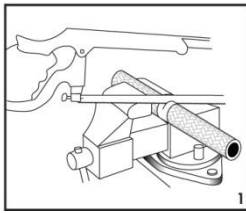


## Hose Assembly Instructions

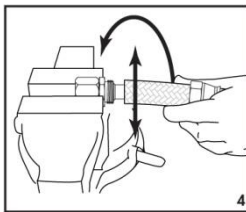
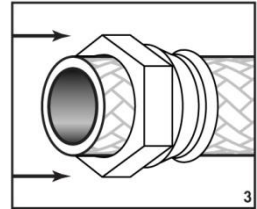
To ensure the correct operation of your brake or clutch hose it is important that you follow the procedures detailed below when during assembly. Whilst there is nothing complicated about the procedure and no special tools are required, extreme care must be taken.



1. Cut the hose to give the required length. We recommend the use of a radial wheel but it can be done satisfactorily with a 32 teeth per inch hacksaw blade. In either case, the hose must be tightly wrapped with electrical or masking tape and the cut made through the tape. Do not cut the hose with a chisel, snips, pliers, or a shear as these may crush the Teflon liner.

2. De-burr the Teflon and trim any loose ends of braid with sharp snips or diagonal cutting pliers. If using plastic coated hose first use a craft knife to trim back the plastic coating leaving about 16mm of the stainless braid exposed.

3. Install the socket on the hose with the threaded end of the socket toward the cut end of the hose. This will be a lot easier and you will end up with fewer holes in your hand if you clamp the socket in a vice. Push socket on well beyond end.

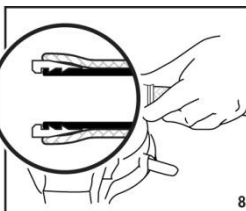
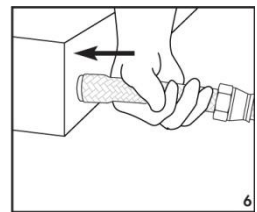


4. Place the hex portion of the nipple in the vice. Insert the end of the hose onto the nipple and bottom the hose against the chamfer seat of the nipple with a rotary motion of the hose. This will size the I.D. of the Teflon tube.

5. Separate the braid from the O.D. of the Teflon tube. The best way is to use a braid spreader tool in the absence of the tool, separate the braid with a small screwdriver or a scribe. Be careful not to scratch or nick the Teflon.

6. Install the sleeve between the braid and the Teflon tube. Make sure that none of the braid is trapped between the Teflon and the sleeve. Bottom the tube against the shoulder of the sleeve and make sure that the sleeve is inserted square.

7. With the nipple held in the vice, push the hose and the sleeve onto the nipple until the sleeve bottoms. Remove the hose and make sure that the Teflon tube is still bottomed against the shoulder of the sleeve and that the sleeve is still square.



8. Push the hose and sleeve back onto the nipple and bottom against the chamfer. Oil the nipple threads. Start the socket onto the nipple threads and hand tighten.

9. Place the socket in the vice and complete the assembly by tightening the nipple onto the socket with a spanner.

10. Blow the assembly clean and pressure test before fitting.

